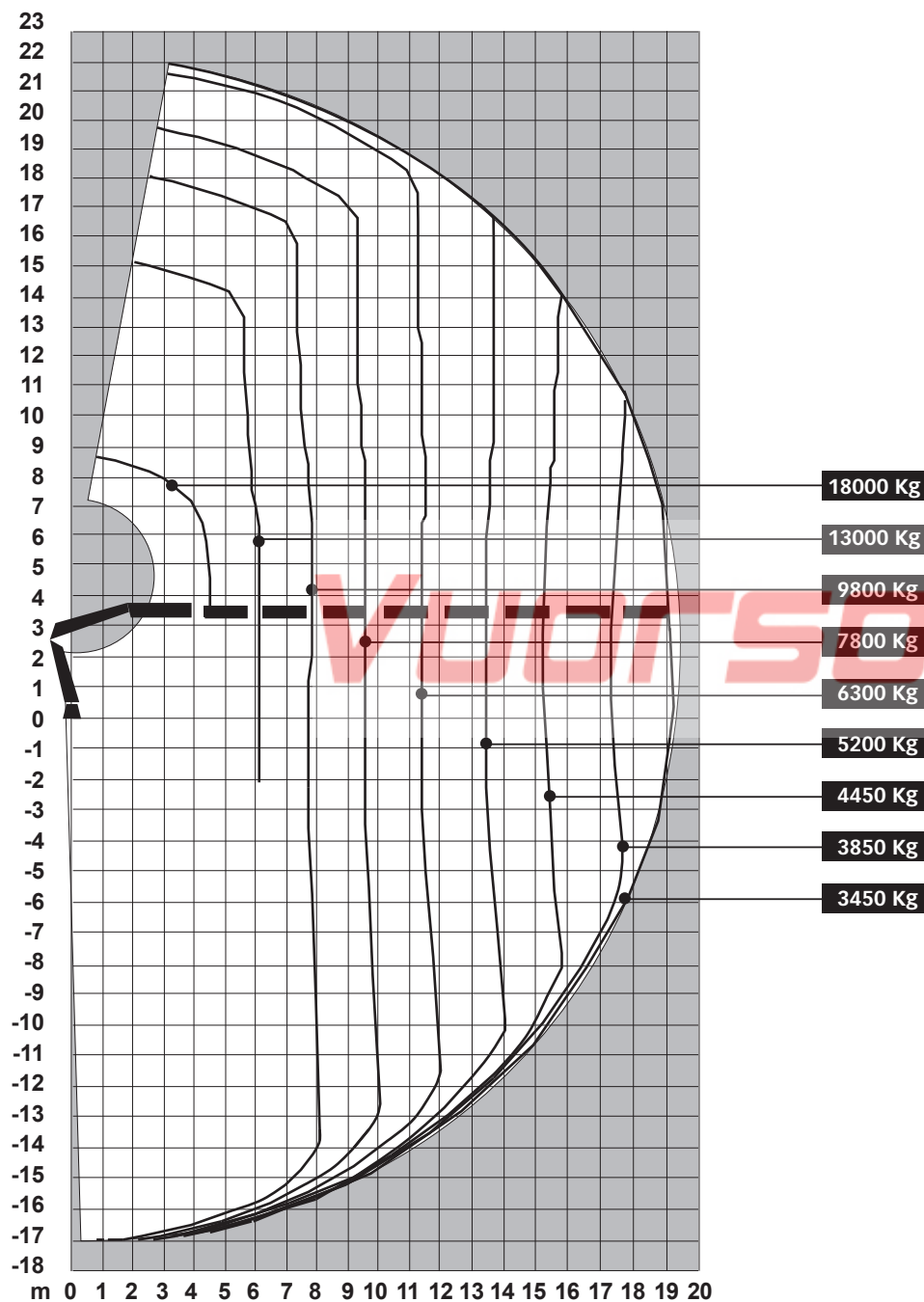


HIAB 1055E-8 HIPRO

LOAD DIAGRAM

To the left of the curve the indicated loads can be handled with any loader function provided that the positions of the booms are optimized from a force point of view.



1055 E-8 HIPRO



HIAB 1055 E HIPRO

TECHNICAL DATA	HIAB 1055E-8 HIPRO
Lifting capacity, max.	804 kNm (82.0 tm)
Hydraulic outreach, standard	19.6 m
Hydraulic boom extension	15.0 m
Lifting Height above installation level Hydraulic	22.0 m
Lifting speed	0.93 m/s
Standard Hook Capacity	18000 kg
Outreach-lifting capacity, standard	4.4 m - 18000 kg 6.1 m - 13000 kg 7.8 m - 9800 kg 9.5 m - 7800 kg 11.4 m - 6300 kg 13.4 m - 5200 kg 15.3 m - 4450 kg 17.4 m - 3850 kg 19.4 m - 3450 kg
Recommended oil flow V91M variable pump	90 - 120 l./min.
Working pressure	38.0 MPa
Power needed at rec. oil flow V91M variable pump	57 - 76 kW
Oil in tank, large size	200 l.
Tank capacity, large size	240 l.
Oil in tank, extra-large size	250 l.
Tank capacity, extra-large size	285 l.
Slewing angle	continuous
Max. Slope viable at full capacity	4.0 °
Height in folded position	2505 mm
Width in folded position	2500 mm
Installation space needed (1)	1730 mm / 1855 mm
Weights:	
Crane in standard version without support legs	7770 kg
Frame attachments	130 kg
Support leg equipment 9m span (2)	1220 - 1390 kg

We reserve the right to introduce changes in design
 Designed and strength calculated in accordance with EN 13001 and EN 12999

(1) Without / With external functions (tools)
 (2) Support legs spread 9m. (min-max)